



- 📍 Factory No. 17 , Damietta Furniture City.
- 📍 82 Central Area, New Damietta, Egypt.
- ✉ [Info@amity-doors.com](mailto:Info@amity-doors.com)
- 🌐 [www.Amity-Doors.com](http://www.Amity-Doors.com)

# Who We are...

## Mission

We At **Amity Doors**, we craft high-security doors designed for homes, businesses, and large-scale projects.

Our doors offer:

Reinforced Iron Sheets – Maximum durability & structural integrity.

Elegant Wood Veneers – A sophisticated, modern finish.

Advanced Locking Systems – Ultimate protection & security.

## Vision

We stay ahead with cutting-edge technology, ensuring every door is secure, stylish, and built to last. Whether you need residential security or custom commercial solutions, we deliver tailored designs to match your needs.



Security Channel  
Between Frame and Leaf

Fully Secured sheet metal 1.2

Stainless Bottom

Wall Supporting Metal Plate

Frame 1.5 mm Metal

U Channel Metal 1.2 mm



Wall Supporting Metal Plate

Frame 1.5 mm Metal

U Channel Metal 1.2 mm

# SPECIAL

R-312

120 cm

**Frame**

Double Frame 1.5 mm

**Leaf**

Full Secured 1.2 mm

**Lock**

Kale Central Lock

**Surface**

Marble Substitute



## R-O15 150 cm

### Technical specification

#### Frame

Double Frame 1.5 mm

#### Leaf

Full Secured 1.2 mm

#### Lock

Kale Central Lock

#### Veneer

American walnut  
natural veneer



## T-O25 150 cm

### Technical specification

#### Frame

Double Frame 1.5 mm

#### Leaf

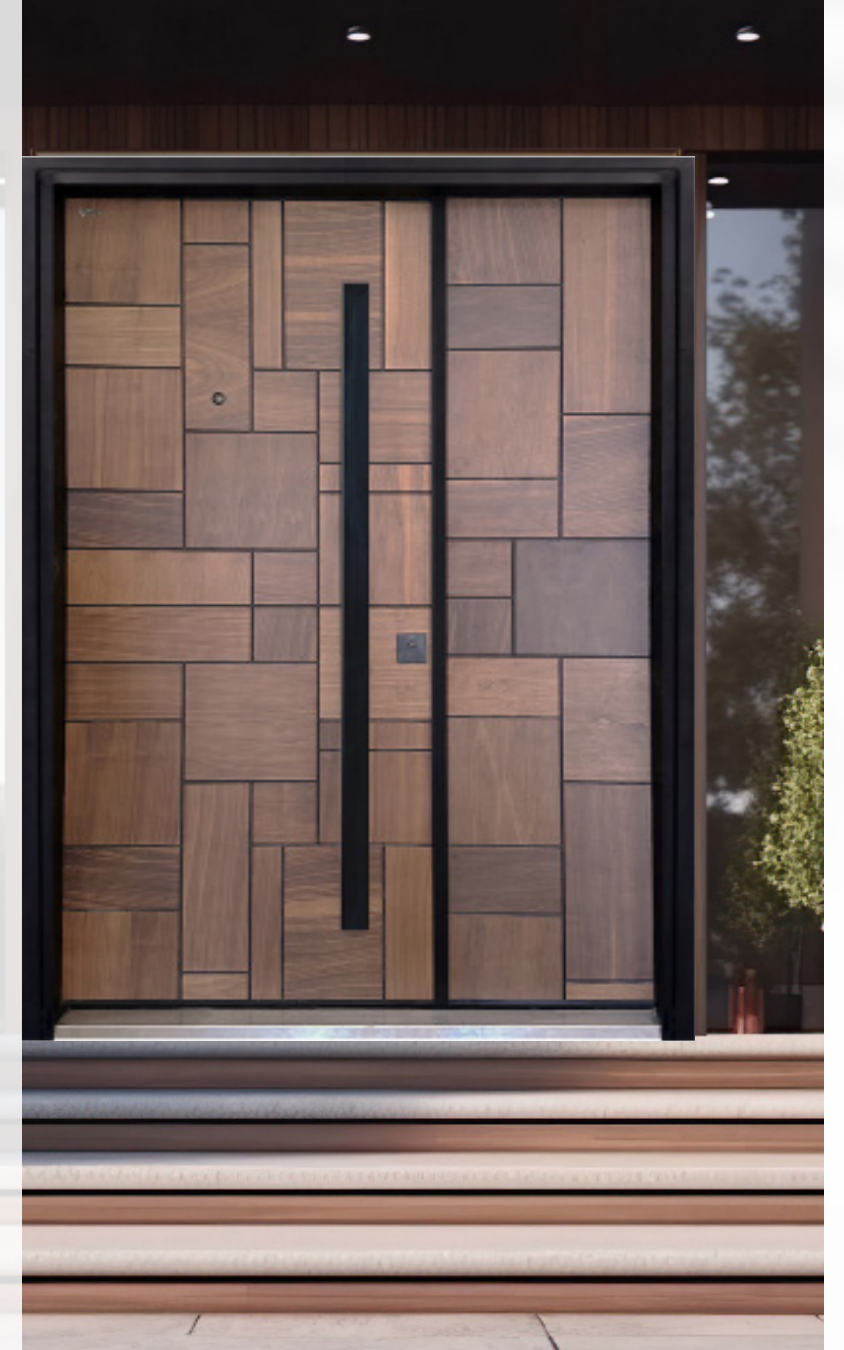
Full Secured 1.2 mm

#### Lock

Kale Central Lock

#### Veneer

American walnut  
natural veneer





# Exclusive Doors

R-O2 150 cm

**Frame**

Double Frame 1.5 mm

**Leaf**

Full Secured 1.2 mm

**Lock**

Kale Central Lock

**Surface**

American walnut  
natural veneer



## R-O51 120 cm

### Technical specification

**Frame**

Double Frame 1.5 mm

**Leaf**

Full Secured 1.2 mm

**Lock**

Kale Central Lock

**Surface**

American walnut  
natural veneer

# Beauty and strength



# S-300

120 cm

## Technical Specification

### frame

Double Frame 1.5 mm

### Leaf

Full Secured 12 mm

### Lock

Kale Central Lock

### Surface

Lacquer Paint  
Veneer



# ROYAL Doors



R-20



### Technical specification

**Frame**  
Double Frame 1.5 mm

**Leaf**  
Full Secured 12 mm

**Lock**  
Kale Central Lock

**Surface**  
American walnut  
Lacquer Paint

Classic



R-20

# R-513

## Technical specification

### Frame

One Frame 1.5 mm

### Leaf

Full Secured 1.2 mm

### Lock

Kale Semi Central Lock

### Surface



# R-152

## Technical specification

### Frame

One Frame 1.5 mm

### Leaf

Full Secured 1.2 mm

### Lock

Kale Semi Central Lock

### Surface

Marble Composite



# R-051



## R-051

### Technical specification

#### Frame

Double Frame 1.5 mm

#### Leaf

Full Secured 1.2 mm

#### Lock

Kale Central Lock

#### Surface

American walnut  
natural veneer





R-002



## R-O15

### Technical specification

**Frame**  
Double Frame 1.5 mm

**Leaf**  
Full Secured 1.2 mm

**Lock**  
Kale Central Lock

**Surface**  
American walnut  
natural veneer



# R-753

## Technical specification

### Frame

Double Frame 1.5 mm

### Leaf

Full Secured 1.2 mm

### Lock

Kale Central Lock

### Surface

Therma Wood

## R-312

### Technical specification

**Frame**

Double Frame 1.5 mm

**Leaf**

Full Secured 12 mm

**Lock**

Kale Central Lock

**Surface**

Liquored Paint



BLACK

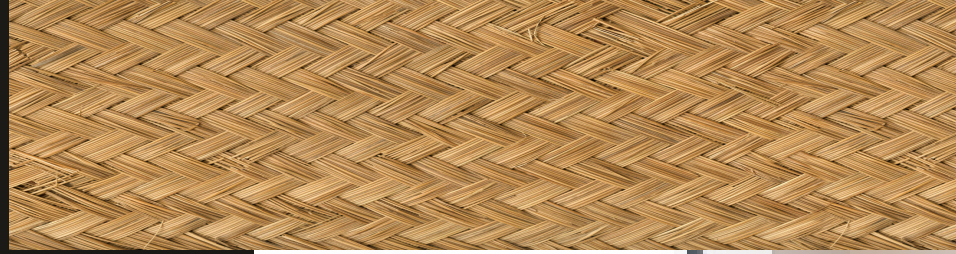


BROWN



WHITE

# Prestige Doors



## Technical Specification

### Frame

One Frame 1.5 mm

### Lock

Kale Semi Central Lock

### Leaf

Full Secured 1.2 mm

### Surface

Embossed Wood  
natural veneer

# S-O4



## S\_2001

### Technical Specification

**Frame**

One Frame 1.5 mm

**Leaf**

Full Secured 1.2 mm

**Lock**

Kale Semi Central Lock

**Surface**

Empossed Wood  
natural veneer



## S-O43

### Technical Specification

**Frame**

One Frame 1.5 mm

**Leaf**

Full Secured 1.2 mm

**Lock**

Kale Semi Central Lock

**Surface**

Empossed Wood  
natural veneer

T-34



S-107

Technical specification

Frame

One Frame 15 mm

Leaf

Full Secured 12 mm

Lock

Kale Semi Central Lock

Surface

Empossed Wood  
natural veneer





# S-016

## Technical specification

### Frame

Single Frame 1.5 mm

### Leaf

Full Secured 1.2 mm

### Lock

Kale Semi Central Lock

### Surface

natural veneer  
Emposed Wood



# S-016

## Technical specification

### Frame

One Frame 1.5 mm

### Leaf

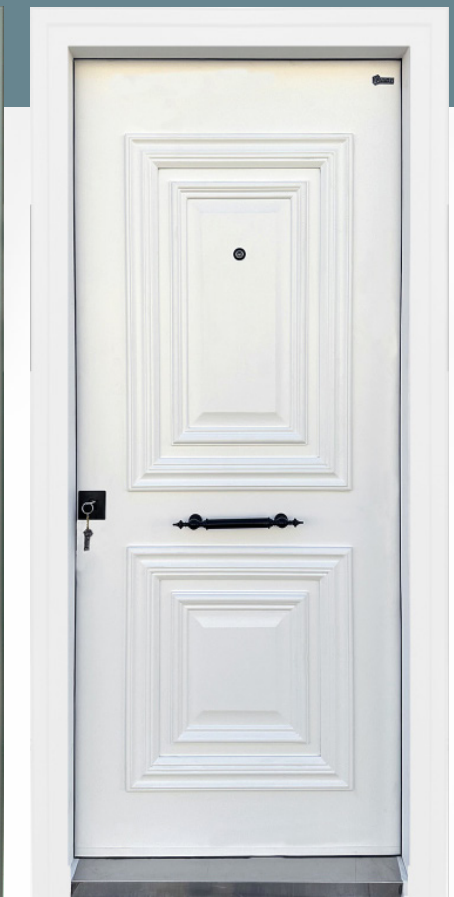
Full Secured 1.2 mm

### Lock

Kale Semi Central Lock

### Surface

Lacquer Paint





# S-018

## Technical specification

**Frame**  
Double Frame 1.5 mm

**Leaf**  
Full Secured 1.2 mm

**Lock**  
Kale Semi Central Lock

**Surface**  
Natural therma wood

# S-100

## Technical Specification

### Frame

One Frame 1.5 mm

---

### Leaf

Full Secured 1.2 mm

---

### Lock

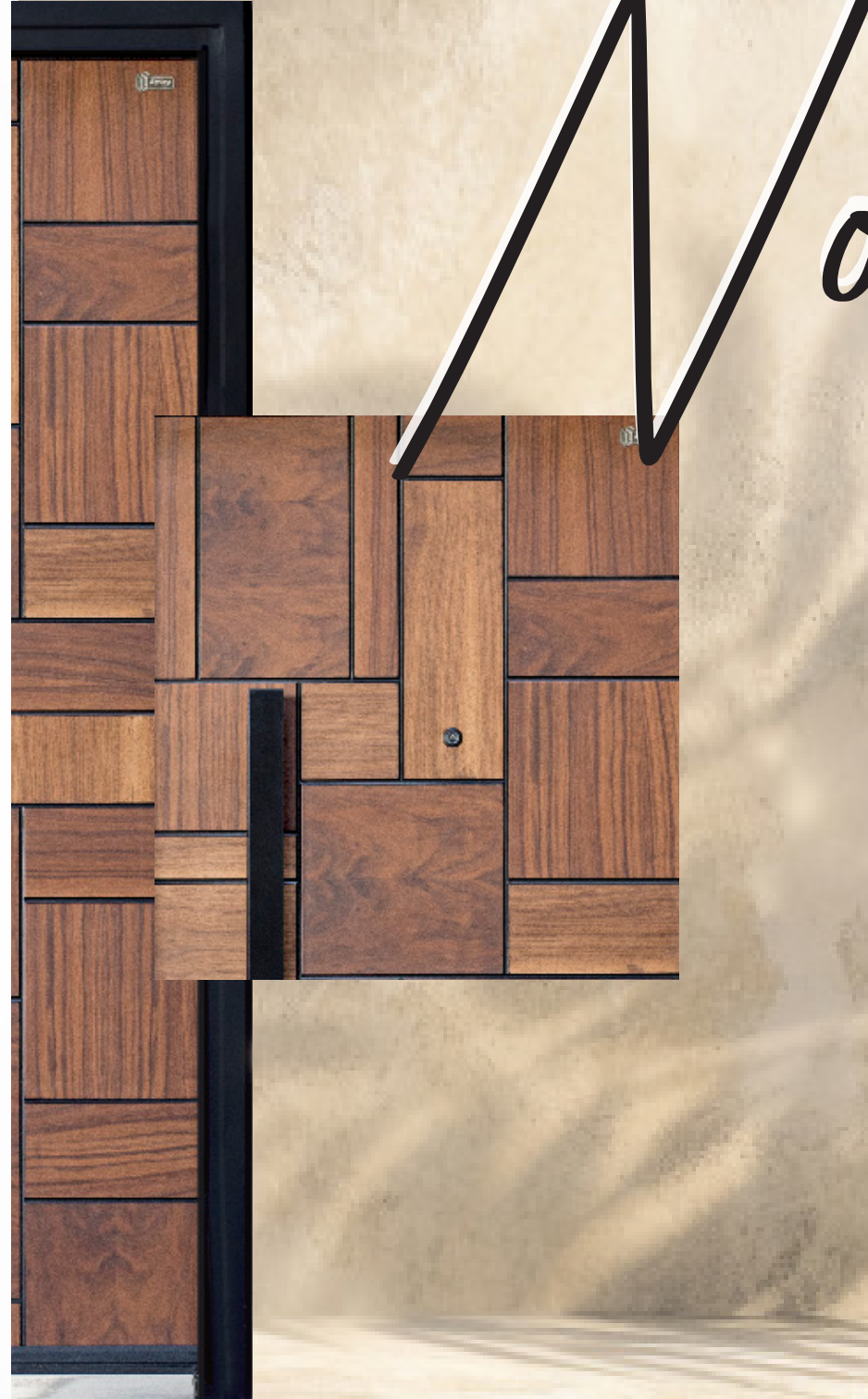
Kale Semi Central Lock

---

### Surface

Pvc veneer





*Mova*

## T-25

### Technical specification

**Frame**

One Frame 1.5 mm

**Leaf**

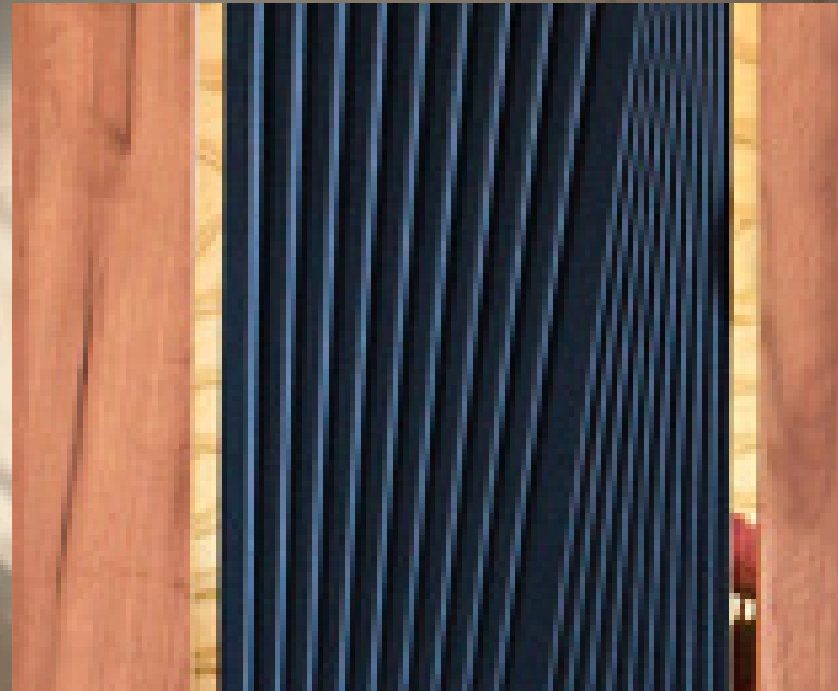
Full Secured 1.2 mm

**Lock**

Kale Semi Central Lock

**Surface**

Natural Veneer



### Technical Specification

## T-17

#### Frame

One Frame 15 mm

#### Lock

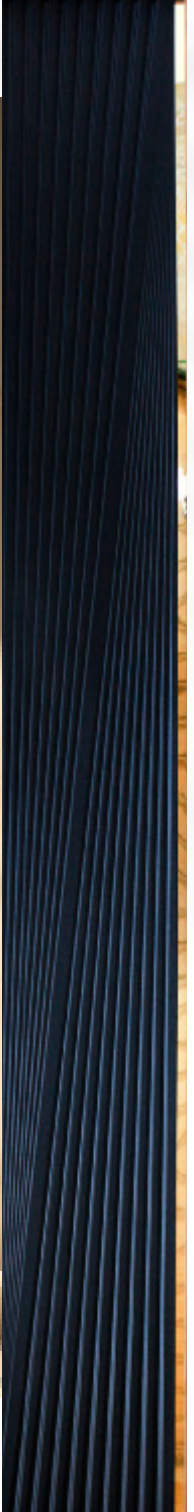
Kale Semi Central Lock

#### Leaf

Full Secured 12 mm

#### Surface

Pvc veneer





# T-15

## Technical Specification

### Frame

One Frame 1.5 mm

### Leaf

Full Secured 1.2 mm

### Lock

Kale Semi Central Lock

### Surface

Natural veneer





T-35



T-22

Technical specification

**Frame**  
One Frame 15 mm

**Leaf**  
Full Secured 12 mm

**Lock**  
Kale Semi Central Lock

**Surface**  
HPL Veneer –  
heat resistance





## T-297

### Technical specification

**Frame**

One Frame 15 mm

**Leaf**

Full Secured 12 mm

**Lock**

Kale Semi Central Lock

**Surface**

Natural Veneer



# S-286 VENEER

## Technical Specification

### Frame

One Frame 1.5 mm

### Leaf

Full Secured 1.2 mm

### Lock

Hok Semi Central Lock

### Surface

Cylinder Paint





# NATURAL VENEER



**Frame**

One Frame 1.5 mm

**Leaf**

Full Secured 1.2 mm

**Lock**

Hok Semi Central Lock

**Surface**

Natural Veneer

*The beauty of  
Natural Veneer*



**T-20**  
**T-20**  
**T-20**  
**T-20**  
**T-20**

**Frame**

One Frame 1.5 mm

**Leaf**

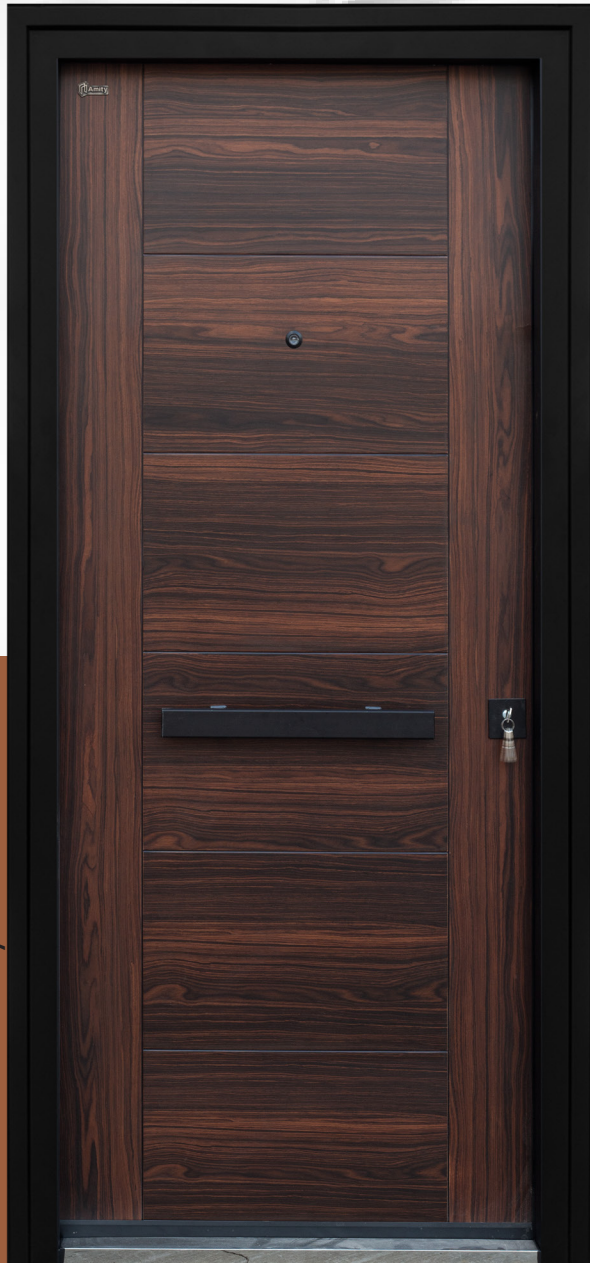
Full Secured 1.2 mm

**Lock**

Hok Semi Central Lock

**Surface**

Natural veneer



# T-260 VENEER

## Technical specification

### Frame

One Frame 15 mm

### Leaf

Full Secured 12 mm

### Lock

Kale Semi Central Lock

### Surface

Natural Veneer



# True Color...



# Prime



F-310



F-286



F-260



## Technical specification

**Frame**  
One Frame 15 mm

**Leaf**  
Full Secured 12 mm

**Lock**  
Hok Semi Central Lock

**Surface**  
CBL veneer





## T-307

### Technical specification

**Frame**

One Frame 1.5 mm

**Leaf**

Full Secured 12 mm

**Lock**

Kale Semi Central Lock

**Surface**

HPL Veneer -  
heat resistance





## F-252

### Technical Specification

#### Frame

One Frame 1.5 mm

#### Leaf

Full Secured 1.2 mm

#### Lock

Hok Semi Central Lock

#### Surface

CBL Veneer



# F-02

Brown

## Technical specification

### Frame

One Frame 1.5 mm

### Leaf

Full Secured 12 mm

### Lock

Kale Semi Central L

### Surface

HPL Veneer -  
heat resistance



# F-02

## Technical specification

### Frame

One Frame 1.5 mm

### Leaf

Full Secured 12 mm

### Lock

Kale Semi Central Lock

### Surface

HPL Veneer -  
heat resistance



F-310

## F-286

### Technical Specification

**Frame**

One Frame 1.5 mm

**Leaf**

Full Secured 1.2 mm

**Lock**

Hok Semi Central Lock

**Surface**

HPL Veneer





## S-308

### Technical Specification

**Frame**

One Frame 15 mm

**Leaf**

Full Secured 12 mm

**Lock**

Hok Semi center lock

**Surface**

Laminox veneer



## S-322

### Technical Specification

**Frame**

One Frame 15 mm

**Leaf**

Full Secured 12 mm

**Lock**

Hok Semi center lock

**Surface**

Laminox veneer

## S-309

### Technical specification

**Frame**

One Frame 1.5 mm

**Leaf**

Full Secured 12 mm

**Lock**

Hok Semi Central Lock

**Surface**

Laminox





S-297



## S-297 GRAY

### Technical specification

**Frame**

One Frame 15 mm

**Leaf**

Full Secured 12 mm

**Lock**

Hok Semi Central Lock

**Surface**

Natural Veneer